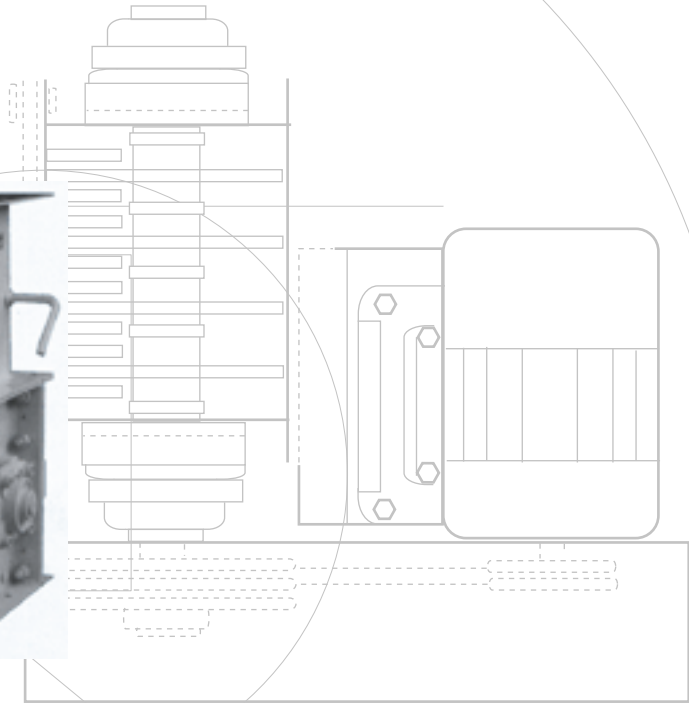
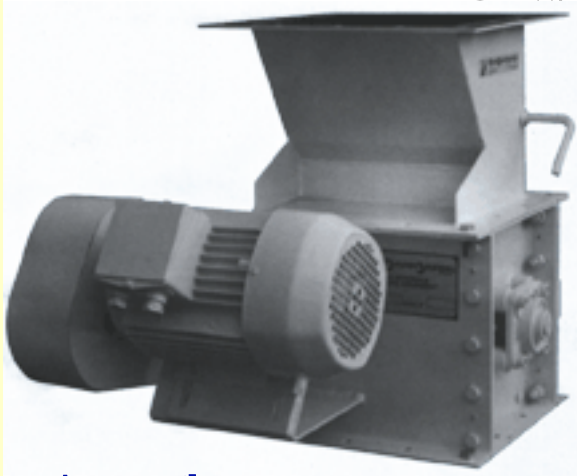


# Lump Crushers

Models 1006, 1012,  
1018, 1024, 1030



**A versatile, compact  
and economical approach  
to lump crushing  
and size reduction**

- **Modular heavy duty construction**
- **Bolted frames**
- **Replaceable case hardened blades & fingers**
- **Bolted removable screen**
- **Gland packing seals with flange bearings**
- **Totally enclosed drive guard**
- **Inlet surge hopper with adjustable flow control gate**
- **Factory assembled and test operated**
- **Finish: prime coated and finish painted**



**KLAUSEN PROCESS MACHINERY PTY. LTD.**

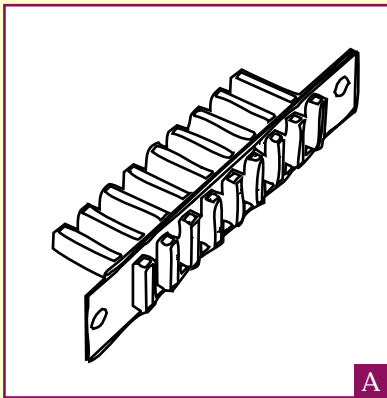
20 BESSEMER STREET, BLACKTOWN NSW 2148 AUSTRALIA  
TEL: (61 2) 9672 - 3222 FAX: (61 2) 9672 - 8733  
E - MAIL: [sales@kpm.com.au](mailto:sales@kpm.com.au) WEBSITE: [www.kpm.com.au](http://www.kpm.com.au)

# Lump Crushers

Models 1006, 1012,  
1018, 1024, 1030

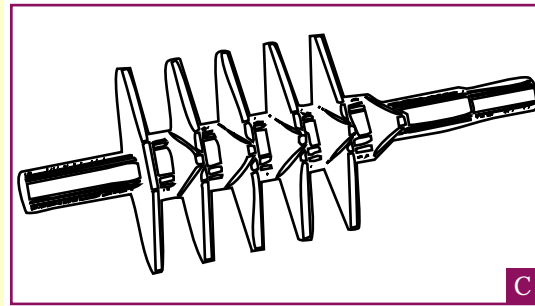
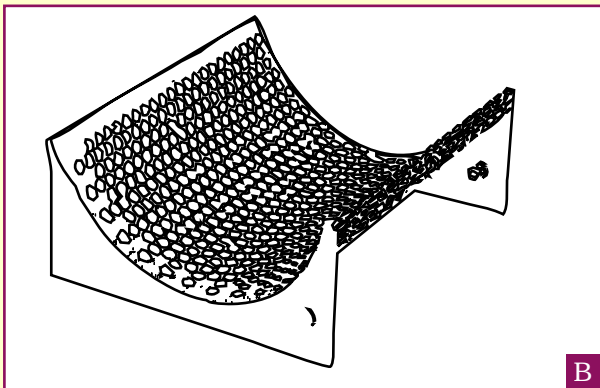
A versatile, compact  
and economical approach  
to lump crushing  
and size reduction

The Lump Crusher is a versatile, compact, economical machine especially suitable for breaking up friable caked materials in a wide variety of lump crushing and size reduction applications. The unique modular construction is designed to operate at low RPM which reduces noise, dust, excessive fines and provides a uniform reduction of most friable products. These units have been used handling materials such as chemicals, detergents, drugs, fertilizers, food products, plastics, waste materials and other related applications where versatility, maintenance and economy are prime considerations.

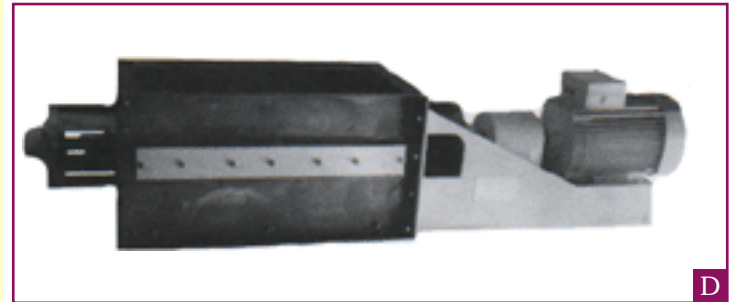


Standard heat  
treated replacement  
fingers

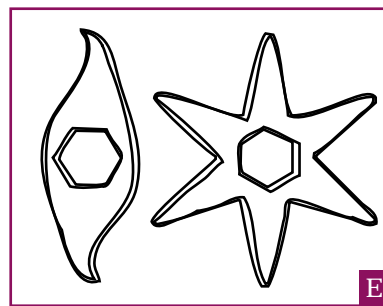
Removable  
perforated screen



Modular Rotor  
Assembly with  
heat treated  
reversible blades



Inlet / Surge Hopper with adjustable flow control gate



Optional  
Shredder Blade  
&  
Star Impact Blade

## Optional Equipment

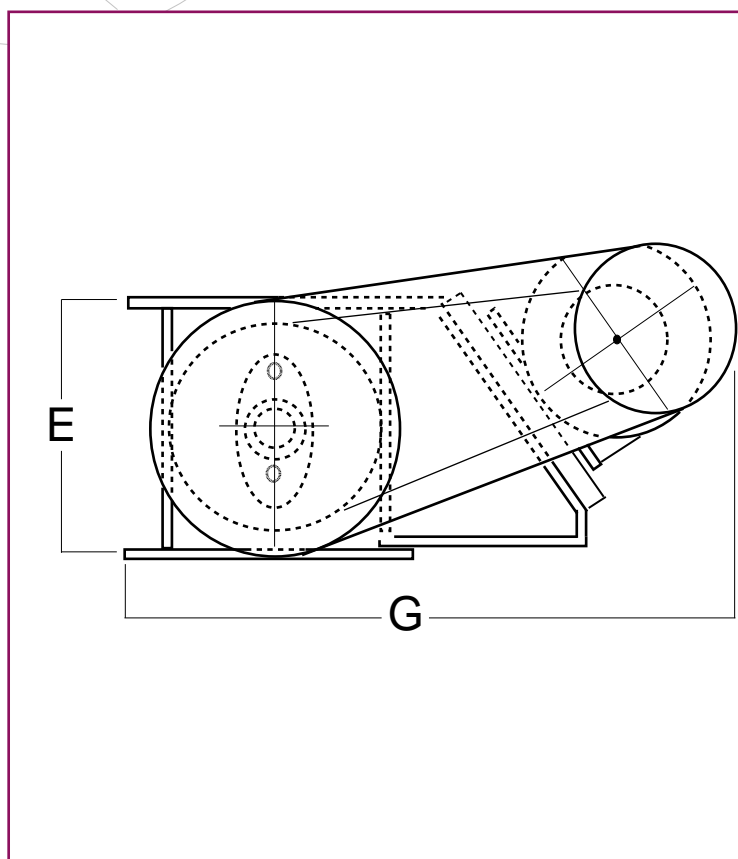
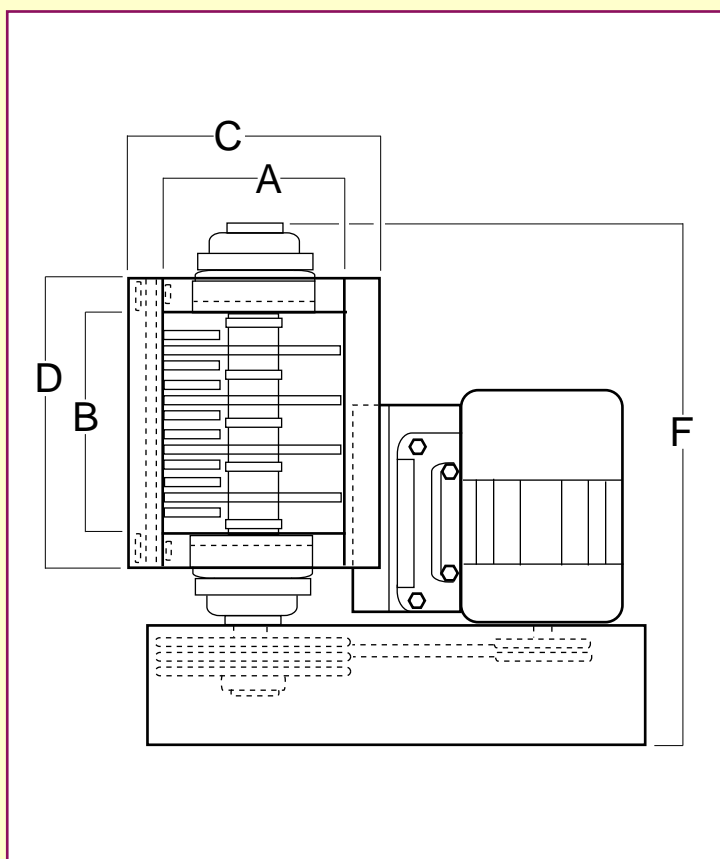
- > Intel hoppers / transitions / chutes / adaptors
- > Discharge transitions or adaptors
- > Magnets
- > Stationary and portable support frames
- > Compression packing / sanitary / air purge seals
- > A.R. liners
- > Sizing screens or grates
- > Stainless steel or sanitary models
- > Double rotary designs
- > Variable speed drives
- > Motor control centres
- > Shaft speed monitor / material flow indicator
- > Special configurations and designs
- > Electronic shear pin overload

## Specifications

Model	Approx. KW Required	Screen Size	Approx. wt. in Kg (less motor)
1006	1.1 - 2.2	1mm - 50mm	175
1012	2.2 - 5.5	1mm - 50mm	220
1018	2.2 - 7.5	1mm - 50mm	300
1024	5.5 - 11	1mm - 50mm	385
1030	5.5 - 11	1mm - 50mm	435

## Dimensions in mm (Approx.)

Model	A	B	C	D	E	F	G
1006	250	152	355	250	305	585	735
1012	250	305	355	405	305	735	735
1018	250	470	355	570	305	900	735
1024	250	625	355	725	305	1055	735
1030	250	750	355	850	305	1180	735





KLAUSEN PROCESS MACHINERY PTY. LTD.

20 BESSEMER STREET, BLACKTOWN NSW 2148 AUSTRALIA  
TEL: (61 2) 9672 - 3222 FAX: (61 2) 9672 - 8733  
E - MAIL: [sales@kpm.com.au](mailto:sales@kpm.com.au) WEBSITE: [www.kpm.com.au](http://www.kpm.com.au)